



COLLINS  CRYSTAL

DOOR HANDLES
MAIN DOOR HANDLES
CABINET HANDLES
& NOBS

CRYSTAL





..what makes it so unique

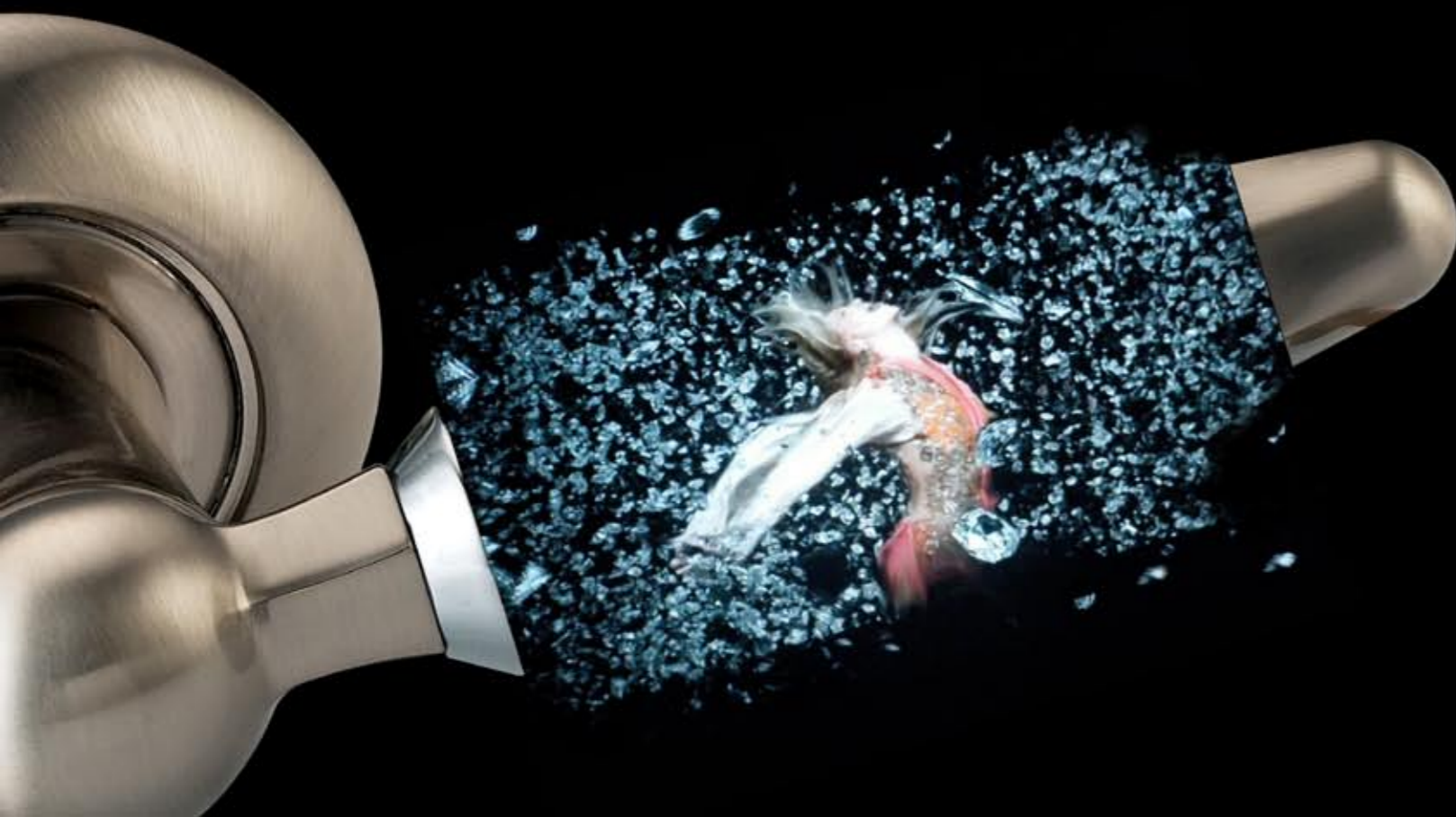
AUSTRIAN CRYSTAL

The traditional Austrian crystal also known as Swarovski crystal is specially designed in order to maximize refraction. Austrian crystal is man-made, essentially a creative cutting of hand-blown glass into every imaginable form of adornment. What makes a Swarovski crystal unique is its composition. This is done with the help of the extra amount of lead that they use in the manufacturing of crystal which constitutes about 32% of the product.

Zamak

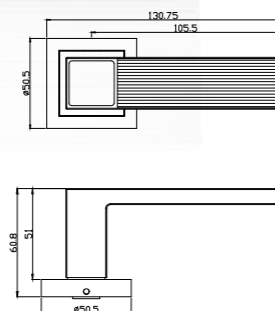
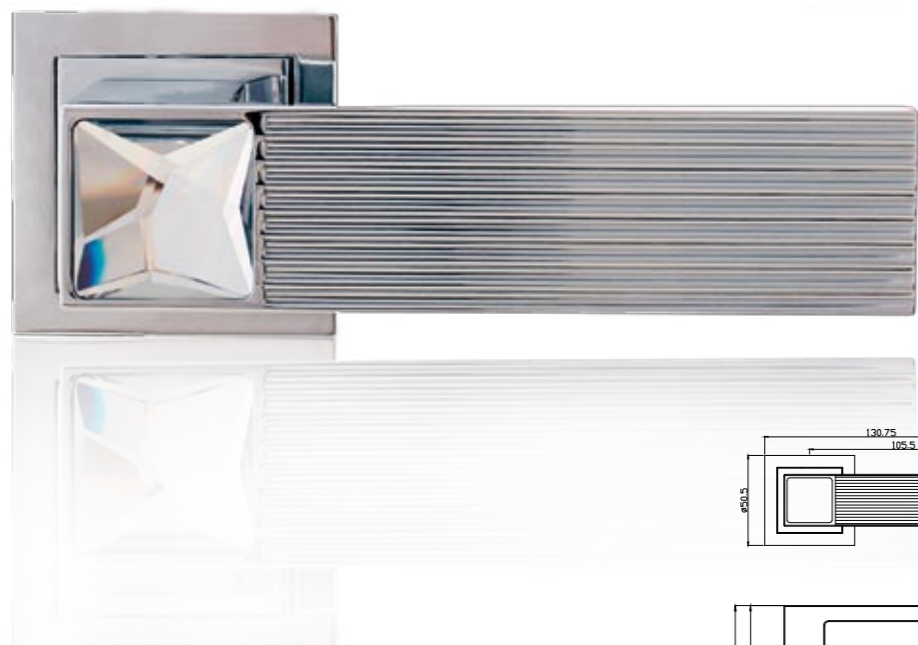
Zamak also known as Zamac is a family of alloys with a base metal of zinc and alloying elements of aluminium, magnesium and copper. Zamak alloys are part of the zinc aluminium alloy family; they are distinguished from the other ZA alloys because of their constant 4% aluminium composition. The name zamak is an acronym of the German names for the metals of which the alloys are composed: Zink (zinc), Aluminium, Magnesium and Kupfer (copper). The New Jersey Zinc Company developed zamak alloys in 1929. While zinc alloys are popularly referred to as pot metal or white metal, zamak is held to higher industrial standards.

Explore
dream
discover



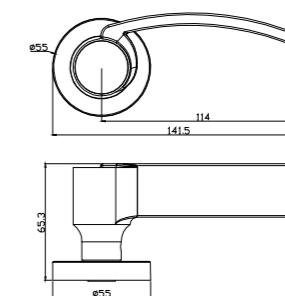
SW 50

Finish	Brush Satin Nickel / Gold/ AB
Door thickness	35-68 mm
Make	Zamak with Austrian Crystal



SW 92

Finish	Gold / Chrome
Door thickness	35-68 mm
Make	Zamak with Austrian Crystal



SW 96

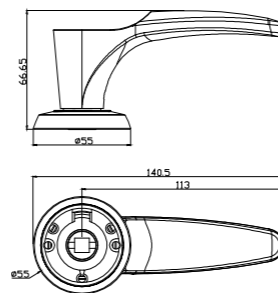
Finish	Brush Satin Nickel
Door thickness	35-68 mm
Make	Zamak with Austrian Crystal

Precious
piece of
art



SW 98

Finish	Brush Satin Nickel, CP
Door thickness	35-68 mm
Make	Zamak with Austrian Crystal



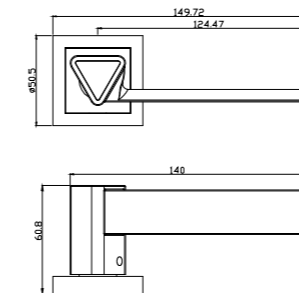
SW 97

Finish	Brush Satin Nickel, Gold
Door thickness	35-68 mm
Make	Zamak with Austrian Crystal



SW 99

Finish	Brush Satin Nickel
Door thickness	35-68 mm
Make	Zamak with Austrian Crystal

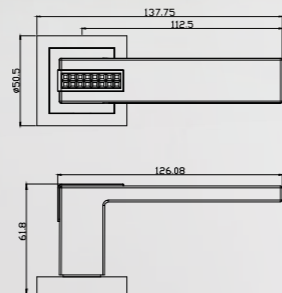


DOOR HANDLES



SW 100B

Finish	Brush Satin Nickel
Door thickness	35-68 mm
Make	Zamak with Austrian

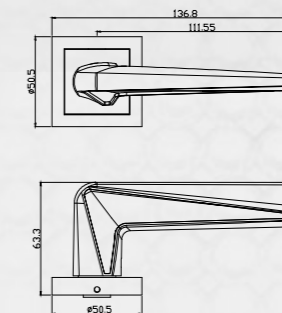


It's my expression



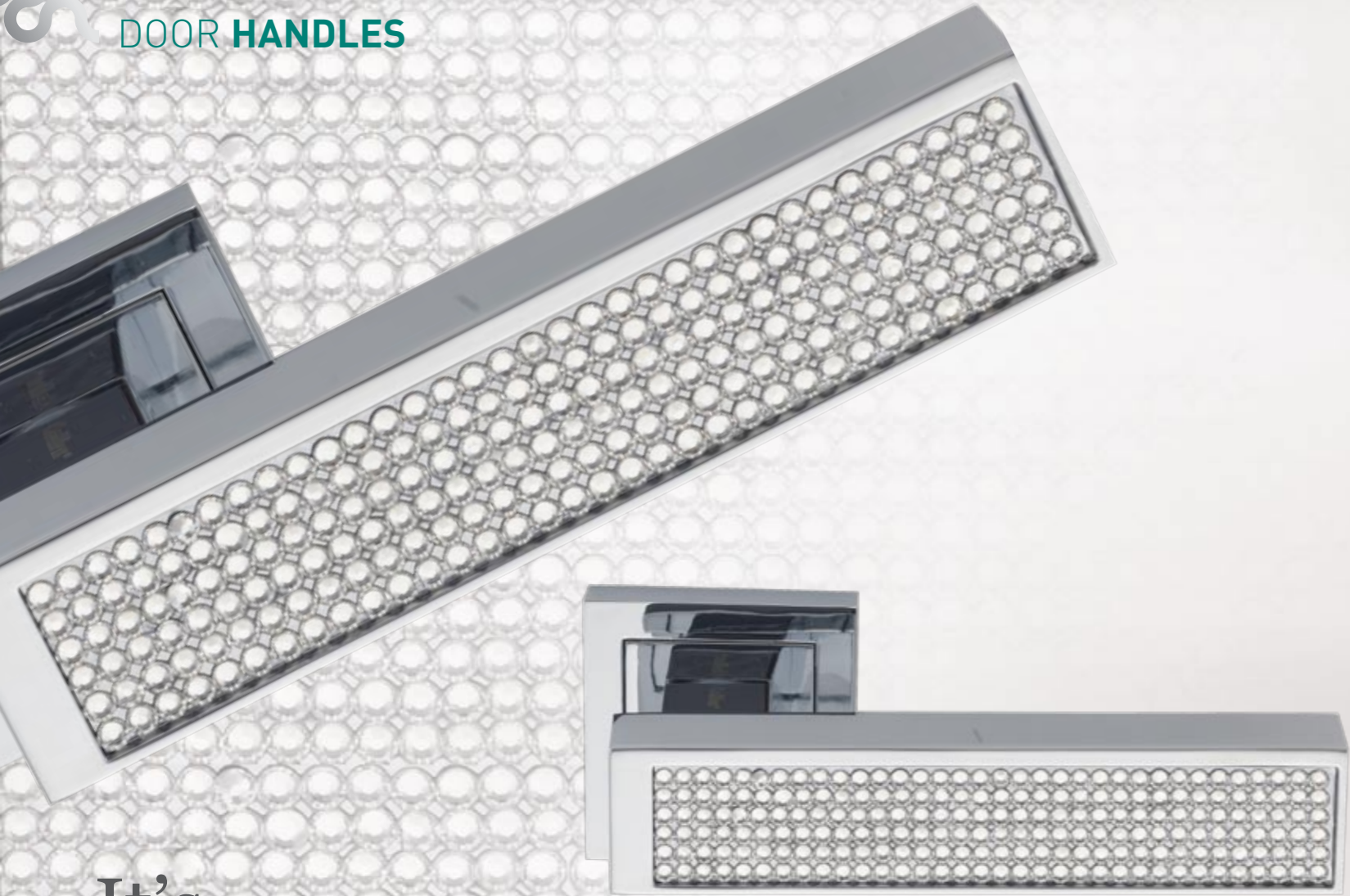
SW 104

Finish	CP
Door thickness	35-68 mm
Make	Zamak with Austrian

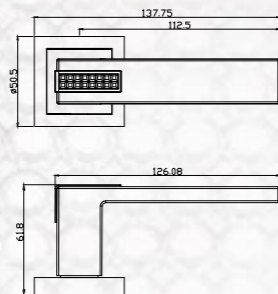




DOOR HANDLES



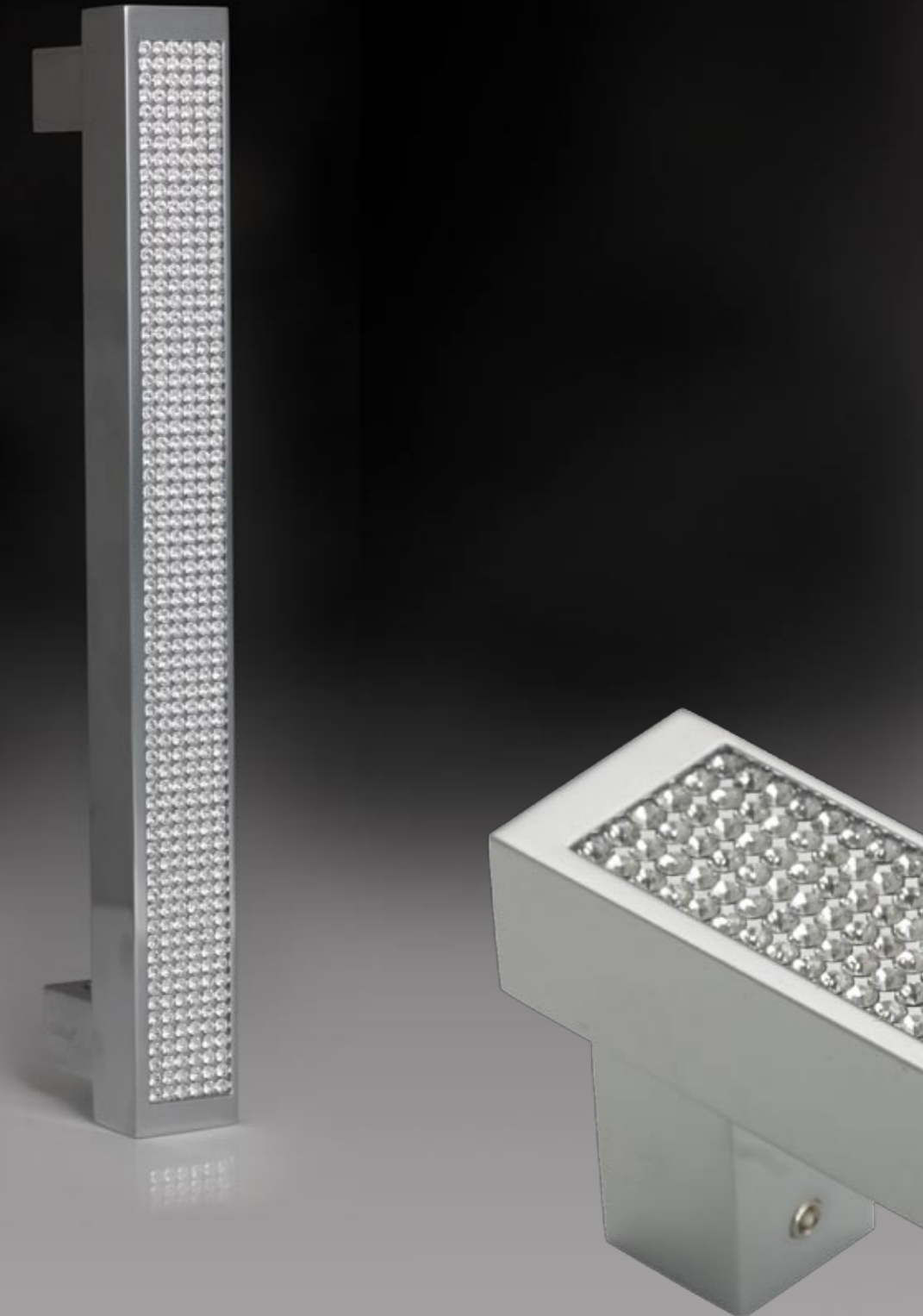
It's show time



SW 101

Finish	CP
Door thickness	35-68 mm
Make	Zamak with Austrian

MAIN DOOR HANDLES



SW 7995

Finish	CP
Make	Zamak with Austrian Crystal

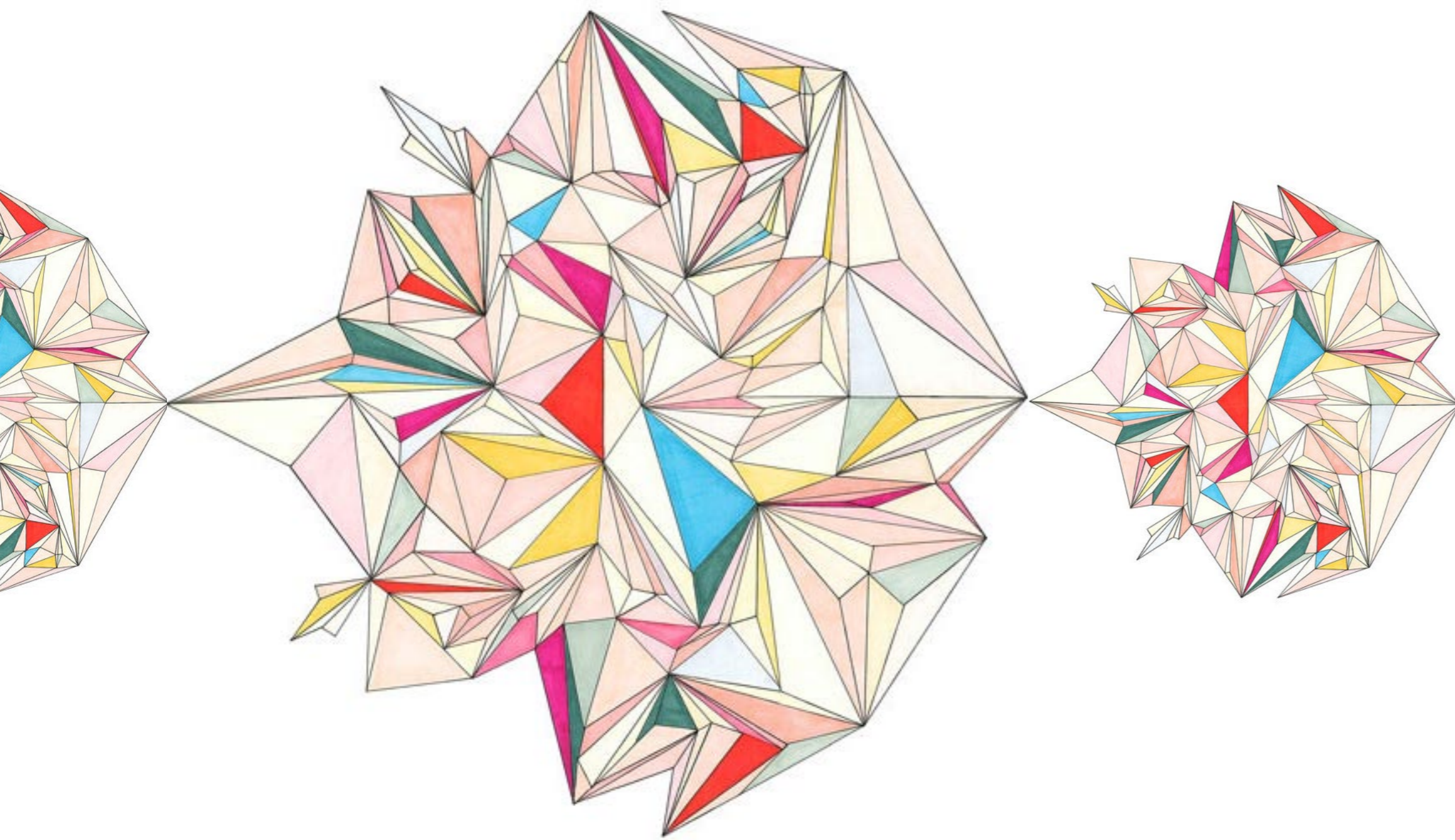


Sense
the feeling of
being
Precious



SW 7994

Finish	CP
Make	Zamak with Austrian Crystal



Cabinet
handles



SW 1018

Size	12"
Finish	Brush Satin Nickel
Door thickness	19-60 mm
Make	SS 304

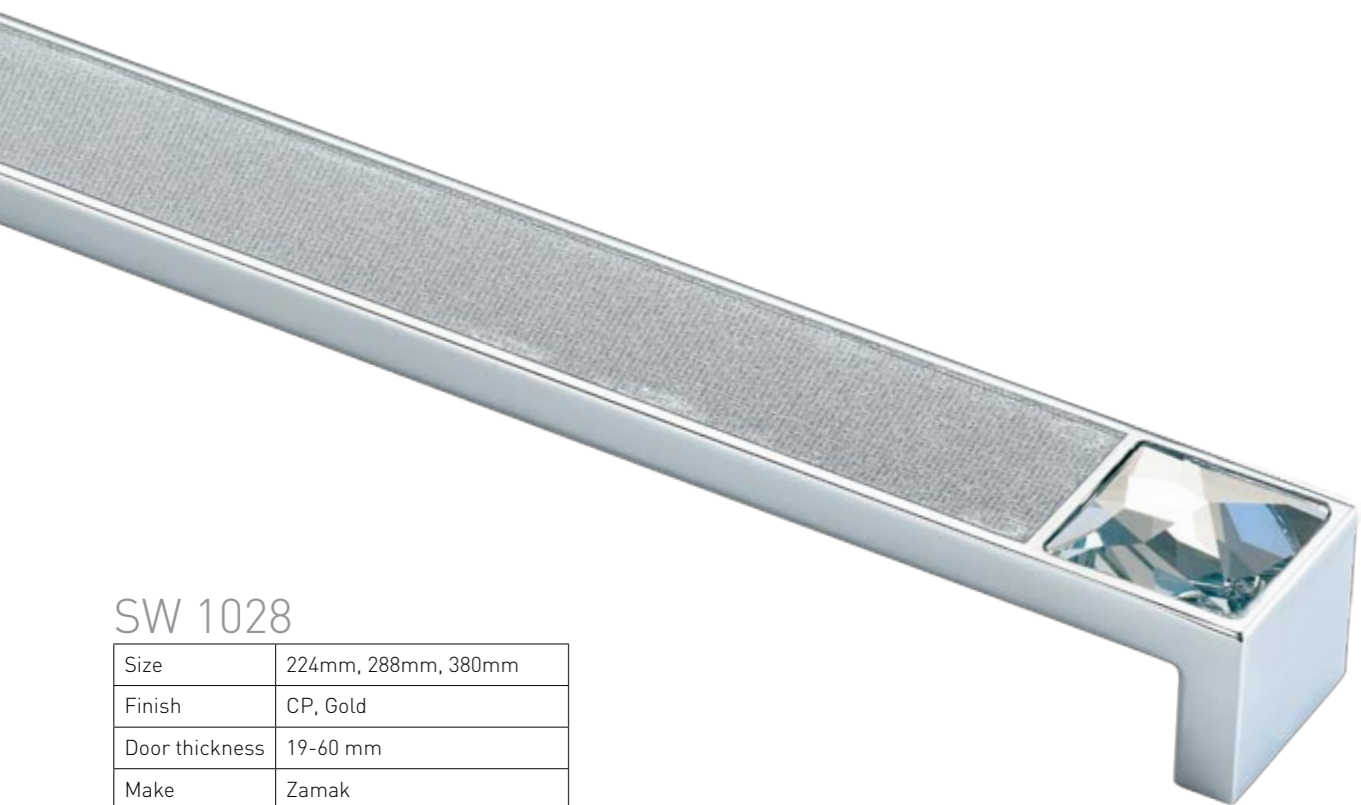
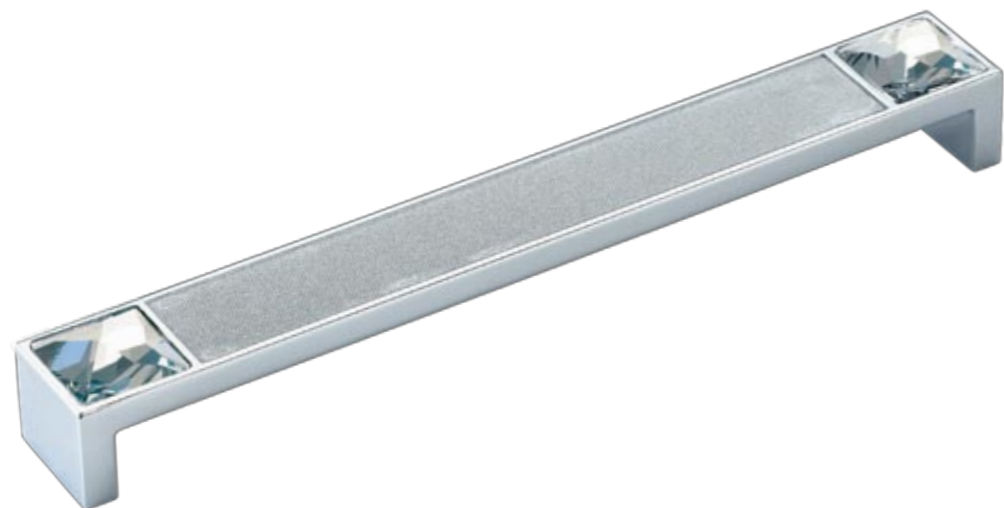
SW 1027

Size	128mm, 192mm
Finish	CP, Gold
Door thickness	19-60 mm
Make	Zamak



SW 1027 A

Size	128mm, 192mm
Finish	Brush Satin Nickel, Gold
Door thickness	19-60 mm
Make	Zamak



SW 1028

Size	224mm, 288mm, 380mm
Finish	CP, Gold
Door thickness	19-60 mm
Make	Zamak

SW 1028 A

Size	224mm, 288mm, 380mm
Finish	Brush Satin Nickel, Gold
Door thickness	19-60 mm
Make	Zamak



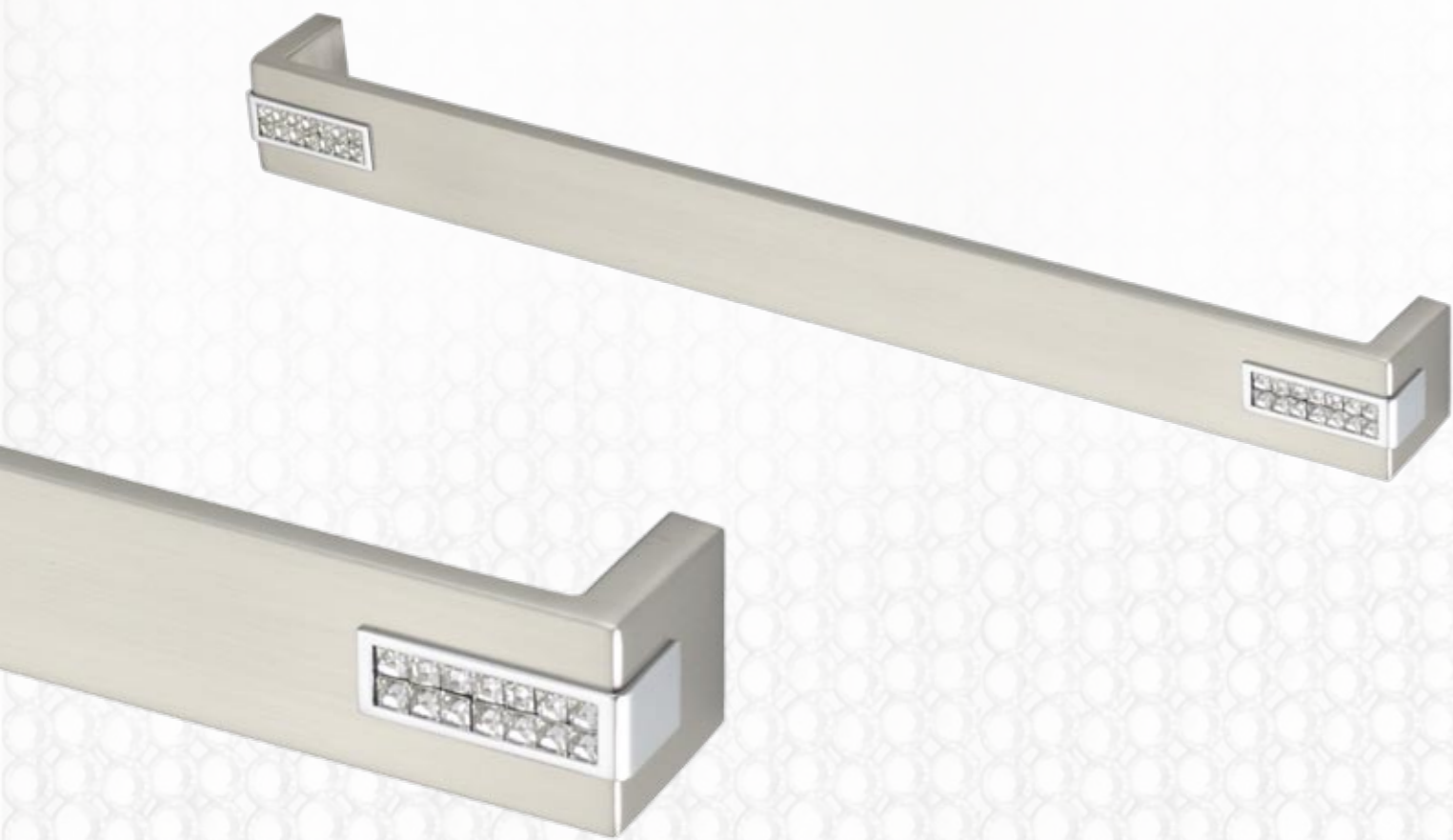
SW 1029

Size	128mm, 192mm
Finish	Brush Satin Nickel
Door thickness	19-60 mm
Make	Zamak



SW 1032- TWO STAR

Size	S / B / XL
Finish	Brush Satin Nickel, BSG
Door thickness	19-60 mm
Make	SS304



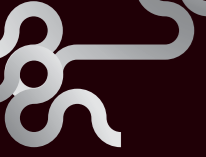
SW - 615B

Size	96, 160, 256, 288mm
Finish	Brush Satin Nickel, CP
Door thickness	19-60 mm
Make	SS304



SW 1611

Size	128mm, 192mm
Finish	Brush Satin Nickel, Gold
Door thickness	19-60 mm
Make	Zamak



Crystal nobs

SW 1011 (round nob)

Size	20mm, 25mm, 30mm, 40mm, 50mm, 60mm
Finish	CP, Gold
Make	Brass with Austrian Crystal



SW 1026

Finish	CP, Gold
Make	Zamak with Austrian Crystal

SW 1030

Finish	CP, Gold
Make	Zamak with Austrian Crystal

SW 1031

Finish	CP, Gold
Make	Zamak with Austrian Crystal

SW 1612

Finish	CP, Gold
Make	Zamak with Austrian Crystal



SW 1032

Size	25mm
Finish	CP, BSN, Gold
Make	Zamak with Austrian Crystal



SW 1031

Size	25mm
Finish	CP, BSG, Gold
Make	Zamak with Austrian Crystal